



# EMGOLD MINING CORPORATION

## IDAHO - MARYLAND TECHNICAL REPORT

### 5.0 ACCESSIBILITY, CLIMATE & PHISIOGRAPHY

The Idaho-Maryland project is located in western Nevada County, east of the City of Grass Valley and south of Nevada City. Grass Valley and Nevada City are Sierra Nevada foothill communities located approximately 20 miles (32 km) north of Auburn and approximately 55 miles (89 km) northeast of Sacramento. State highways 174, 49 and 20 connect the Grass Valley/Nevada City area regionally.

The Idaho-Maryland property is located 1.5 miles from the center of Grass Valley, Nevada County, in north central California. The property comprises approximately 2,800 acres of mineral rights and 145 acres of surface rights. State Highway 20/49 passes approximately 1 mile to the west and northwest of the property.

The Idaho-Maryland property is at an elevation of approximately 2,650 ft above mean sea level. The area is in the foothills of the Sierra Nevada range and the project site exhibits moderate topographic relief.

Streams include Wolf Creek which flows from east to west along the northern boundary of the property, and South Fork of Wolf Creek, which runs from east to west along the southern edge of the property.

The Grass Valley/Nevada City area enjoys a mild climate year round. January average daytime and night-time temperatures are 54 and 32°F respectively, and the July average daytime and night-time temperatures are 90°F and 57°F respectively. Annual precipitation averages 53" with most of the rainfall occurring between November and March. Monthly average temperature and precipitation data is presented in Table 5-1 and Figures 5-2 and 5-3. Snow occurs only two to four times each winter, with accumulations of 2" to 12" per event and rarely remains for more than three or four days.

The Idaho-Maryland site is mostly wooded with some open grassy areas. The Round Hole site is mostly wooded while the New Brunswick site is partially wooded with open grassy areas. The primary vegetation in the area includes Madrone, Western Red Cedar, Douglas Fir, Bigleaf Maple, Black Oak, Manzanita, California Coffeeberry, Currant, and Honeysuckle. Vegetation in the wet meadow areas includes Bromegrass, Yellow foxtail, rye, beak rush, fescue, bulrush, rush, smooth brome, and Orchard grass.

An electric transmission line belonging to the Pacific Gas and Electric Company traverses the South Fork valley.



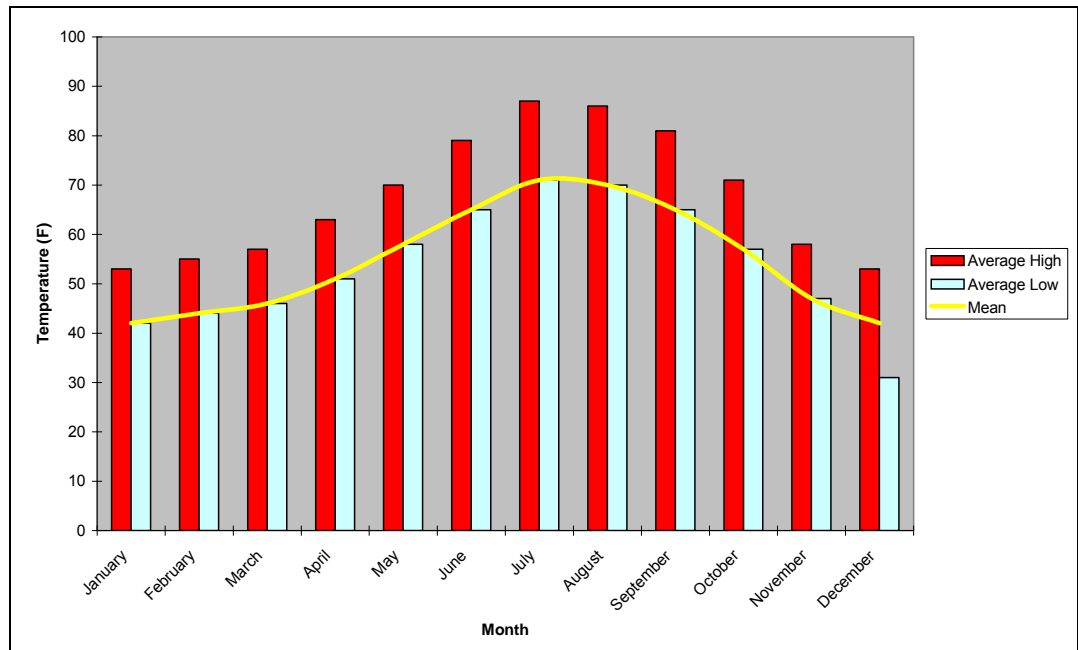
# EMGOLD MINING CORPORATION

## IDAHO - MARYLAND TECHNICAL REPORT

Table 5-1: Grass Valley Climatology by Month (minimum period of 30 years)

Month	Temperature			Average Precipitation (inches)	Cumulative Precipitation (inches)
	Average High (°F)	Average Low (°F)	Mean (°F)		
January	53	42	42	9.86	9.86
February	55	44	44	9.21	19.07
March	57	46	46	8.52	27.59
April	63	51	51	3.69	31.28
May	70	58	58	1.97	33.25
June	79	65	65	0.62	33.87
July	87	71	71	0.18	34.05
August	86	70	70	0.23	34.28
September	81	65	65	1.10	35.38
October	71	57	57	2.72	38.10
November	58	47	47	7.08	45.18
December	53	31	42	7.89	53.07
Average	68	54	55	4.42	
<b>Total</b>				<b>53.07</b>	

Figure 5-1: Grass Valley Temperature Ranges (minimum period of record: 30 years)





# EMGOLD MINING CORPORATION

## IDAHO - MARYLAND TECHNICAL REPORT

Figure 5-2: Grass Valley Precipitation by Month

